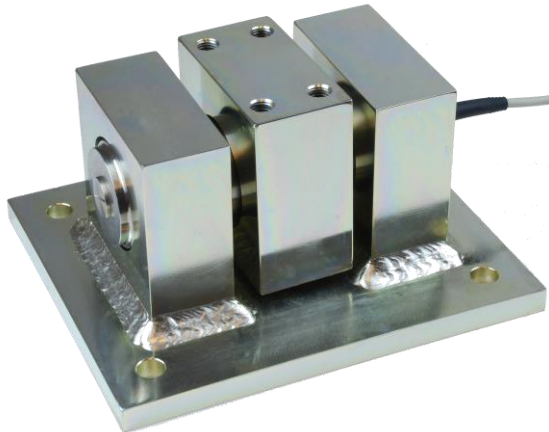


Weigh Module KDH-5



TECHNICAL DATA

Rated load (R.L.)		kN	200, 300, 400, 500
Nonlinearity		% of R.O.	± 0.075
Repeatability		% of R.O.	0.02
Load	Safe	% of R.L.	200
	Ultimate	% of R.L.	300
Side Load	Safe	% of R.L.	100
	Ultimate	% of R.L.	200
Input voltage	recommended	V DC or AC	5
	maximum	V DC or AC	18
Input resistance		ohm	382 ± 5
Output resistance		ohm	350 ± 5
Rated output (R.O.)		mV/V	1.0
Zero balance		% of R.O.	± 5.0
Temperature range		°C	-40 to + 80
Temperature effect (-10 to +50°C):	on output	% of output/°C	± 0.005
	on zero balance	% of R.O./°C	± 0.005
Insulation resistance at 200 V DC		Gohm	> 4
Material			Stainless Steel Load Cell, Plated Steel Bracket, Stainless Optional
Electrical connection			10 m shielded Four conductor cable
EX Approval			ATEX, IECEX
Degree of protection			IP 67

DIMENSIONS KDH-5

